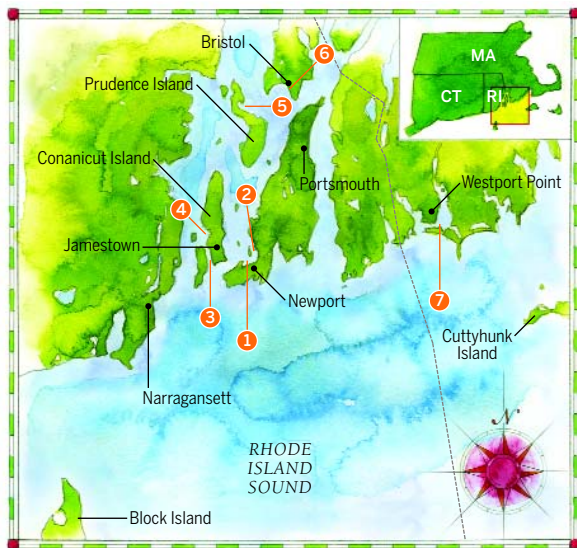


20 Miles Around...

YOUR GUIDE TO THE "SAILING CAPITAL OF THE WORLD"

Newport, R.I.

BY REBECCA WATERS



The name "Newport" is synonymous with sailing. Quiet anchorages, remote beaches, bustling fishing towns, and gourmet restaurants all exist within a 20-mile sail of this historic harbor. Enjoy the stronger winds and open water of Rhode Island and Block Island sounds, or explore Narragansett Bay, where winds tend to be lighter. Whether you're after a day's adventure or a weekend cruise, there's plenty to keep you busy in Rhode Island and nearby Massachusetts waters.

1 Brenton Cove, Newport Brenton Cove is a quiet place to anchor or moor for lunch or overnight. Swim to the beach, where you can dive off the rocks, watch the boats in the harbor, and admire the man-

sions along the waterfront.

2 Newport Harbor Make reservations with the harbor master early if you want to dock or moor in the main harbor. Staying here puts you in prime position to people watch, check out the restaurants, and rent a bike or moped for inland explorations.

3 Mackerel Cove, Jamestown (3 miles) A place to moor or anchor for a picnic and a swim off its sandy beach. Usually empty, this spot feels like your own private cove. It is open to the southeast, and heavy winds can kick up a swell.

4 Dutch Harbor, Jamestown (11 miles) Moor or anchor at Dutch Harbor and walk into town to enjoy several

restaurants or check out the popular Jamestown Oyster Bar or the 1950s-style Narragansett bar with shuffleboard tables.

5 Potter Cove, Prudence Island (14 miles)

This unspoiled cove is a great place to hike, swim, and dig clams. A nice overnight anchorage.

6 Bristol (15 miles) Most visitors moor or dock downtown to enjoy the restaurants and shops of this historic fishing town; dock space and moorings are also available at the Herreshoff Marine Museum, which celebrates the glory days of yacht design and the America's Cup.

7 Westport, Massachusetts (21 miles) Westport is known for its clear water, 3½-mile white-sand public beach, and islands to explore by dinghy. Mooring in Westport puts you right in the middle of this small fishing village, where you can eat out or stock up.

MORE ONLINE...

Suggest your own favorite haunts around Newport and see a list of our favorites within 40 miles of Newport at www.sailmagazine.com. Thanks to Brian Blank of Bareboat Sailing Charters for his destination suggestions.



JUST THE FACTS

PREVAILING WIND SOUTHWEST

As the land heats up, usually between 1100 and 1130, a steady 16-knot wind that locals call the Narragansett Sea Train builds.

SAILING SEASON MAY TO OCTOBER

September and October can offer ideal weather and wind conditions without the summer crowds.

RESTAURANTS

- ★ **Black Pearl** (Best chowder in New England)
- ★ **Clark Cooke House** (A different treat on every floor, from sushi to burgers—and a night club too)
- ★ **The Mooring** (Outdoor seating on the harbor and a varied menu and wine list)
- ★ **Scales and Shells** (Great seafood)
- ★ **Castle Hill Inn** (Famous Sunday brunch served on the lawn overlooking East Passage)

BARS

- ★ **Red Parrot** (Full menu and tasty drinks, especially the Bloody Marys)
- ★ **Café Zelda** (Popular sailor haunt with delicious food)

ATTRACTIONS

- ★ **Museum of Yachting** at historic Fort Adams
- ★ **Seaman's Church Institute** (A sailors' hostel with a library and laundry. Try lunch at the Aloha Café)
- ★ **Aquidneck Lobster** (Buy fish right off the dock from this co-op)
- ★ **Newport Shipyard** (Where all the best events are staged and all the fancy boats dock)
- ★ **Armchair Sailor** (The leading nautical book and chart store in New England)

CHARTER

- ★ **Bareboat Sailing Charters** (www.bareboatsailing.com)
- ★ **Sail Newport** (www.sailnewport.org)